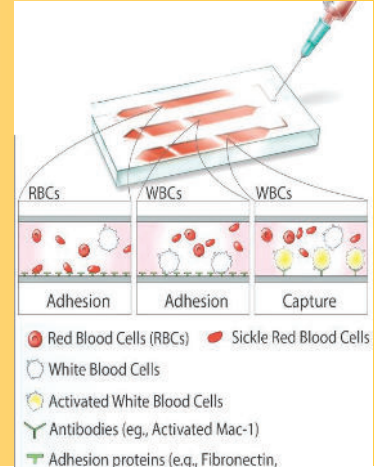


Adhesion BioChip

Single cell adhesion analysis of red blood cells and white blood cells in SCD



About

MICROCHANNEL FUNCTIONALIZATION

Laminin, Fibronectin, ICAM-1, VCAM-1, E-selectin, P-selectin

PHYSIOLOGICAL RELEVANCE

Micro-physiologic flow conditions, shear stress range from 1 dyne/cm² to 10 dyne/cm²

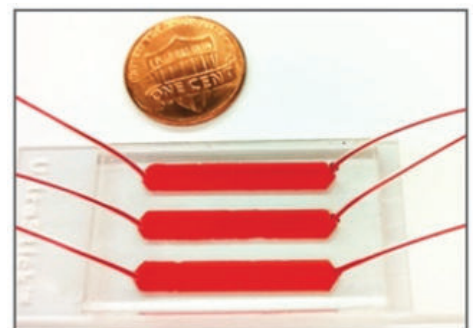
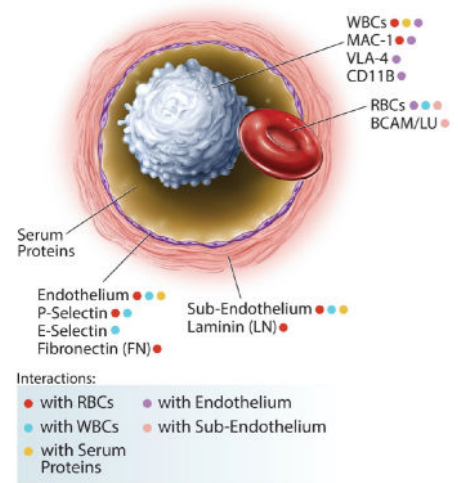
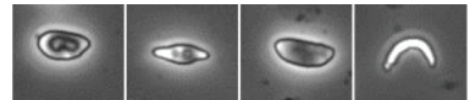
SAMPLE

Use of whole blood in EDTA, Nacitrate, or heparin, with no preprocessing or dilution

Typical Uses

- ✓ CLINICAL ASSAY
- ✓ PERSONALIZED MEDICINE
- ✓ RESEARCH
- ✓ DRUG DEVELOPMENT

Single Cell Analysis



Highlights

TARGETED THERAPIES

Published Results on patient-specific impact of Crizanlizumab on cellular adhesion (1).

CURATIVE THERAPIES

NHLBI-supported multisite study to assess blood cell adhesion before and after a gene-based therapy for curative intent (2).

Based on publications: Blood Advances, 2020; AJH, 2018 & 2020, Translational Research, 2016; Scientific Reports, 2014

1. <https://pubmed.ncbi.nlm.nih.gov/32208292/>
2. <https://curesickle.org>