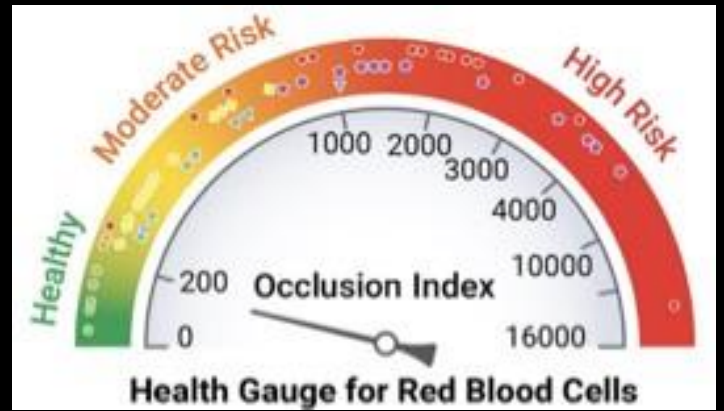
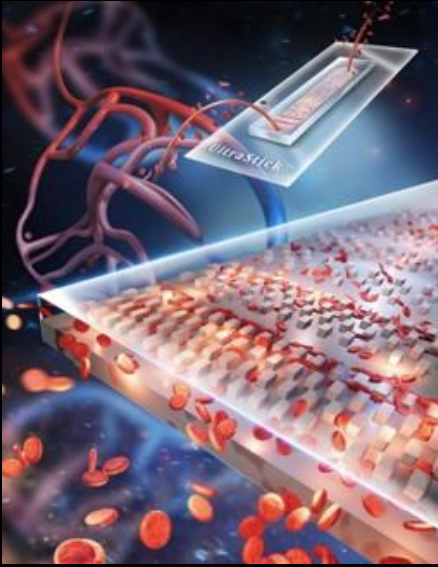


OcclusionChip



About

Assessing microvascular occlusion mediated by red blood cells

Microvasculature Mimicking

A gradient of microcapillary networks
Side passageways mimicking the arteriovenous anastomoses

Circulatory Diseases

A universal parameter for assessment of RBC deformability in many circulatory diseases (RBC health gauge):
Occlusion Index (OI)

Adhesion & Deformability

The OcclusionChip can be functionalized with adhesion proteins for simultaneous adhesion & deformability measurements

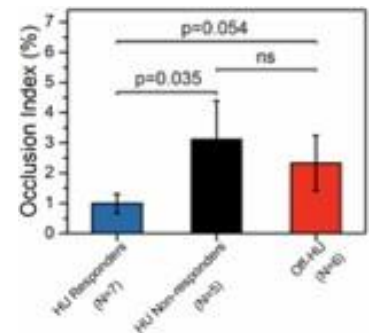
Sample

Isolated RBCs at near physiologic hematocrit level (20%)

Typical Uses

- ◆ Clinical Assay
- ◆ Personalized Medicine
- ◆ Research
- ◆ Drug Development

Treatment Response



Highlights

Targeted Therapies

Drugs that target RBC sickling/deformability (e.g., Voxelotor) in SCD

Curative Therapies

NHLBI-supported multi-site study to assess RBC mediated microcapillary occlusions before and after a gene-based therapy for curative intent¹

Based on publications: Lab on a Chip, 2020; Microcirculation, 2020

1. <https://curesickle.org>



BioChip Labs

"Disrupting disease through better diagnostics"

BioChip Labs
7100 Euclid Ave Ste 175
Cleveland, OH, USA

TEL: 216-860-0426
FAX: 440-394-7288
INFO@BIOCHIPLABS.COM