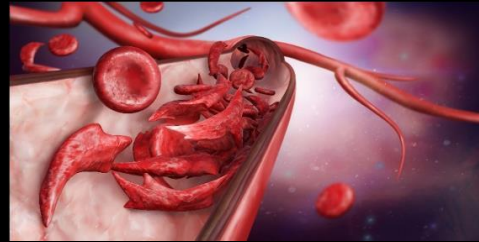
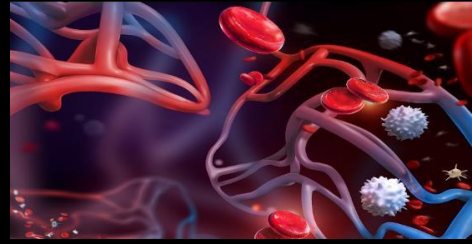
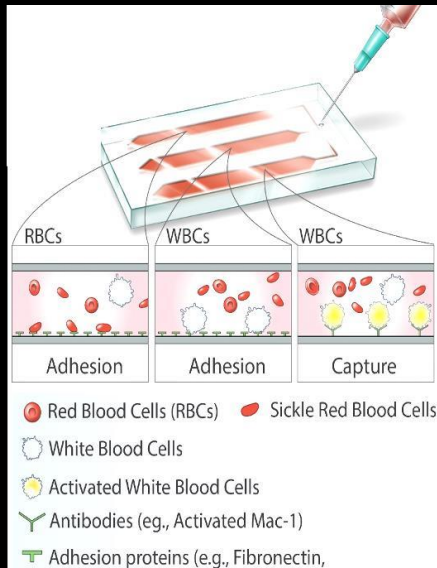


Adhesion BioChip



About

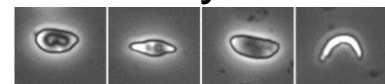
Single cell adhesion analysis of red blood cells and white blood cells in SCD

Microchannel Functionalization	Physiological Relevance	Sample
<ul style="list-style-type: none"> Laminin Fibronectin ICAM-1 VCAM-1 E-selectin P-selectin 	<p>Micro-physiologic flow conditions, shear stress range from 1 dyne/cm² to 10 dyne/cm²</p>	<p>Use of whole blood in EDTA, Na-citrate, or heparin, with no pre-processing or dilution</p>

Typical Uses

- Clinical Assay
- Personalized Medicine
- Research
- Drug Development

Single Cell Analysis



Highlights

Targeted Therapies

Published Results on patient-specific impact of Crizanlizumab on cellular adhesion¹

Curative Therapies

NHLBI-supported multi-site study to assess blood cell adhesion before and after a gene-based therapy for curative intent²

Based on publications: Blood Advances, 2020; AJH, 2018 & 2020, Translational Research, 2016; Scientific Reports, 2014

1. <https://pubmed.ncbi.nlm.nih.gov/32208292/>
2. <https://curesickle.org>



BioChip Labs

"Disrupting disease through better diagnostics"

Bio Chip Labs
7100 Euclid Ave Ste 175
Cleveland, OH, USA

TEL: 216-860-0426
FAX: 440-394-7288
INFO@BIOCHIPLABS.COM